



ELECTRONIC COPY

LG776619210
Report verification at igi.org



February 25, 2026

IGI Report Number LG776619210

Description LABORATORY GROWN DIAMOND

Shape and Cutting Style CUSHION MODIFIED BRILLIANT

Measurements 11.72 X 8.29 X 5.45 MM

GRADING RESULTS

Carat Weight 4.13 CARATS

Color Grade D

Clarity Grade VVS 1

Cut Grade EXCELLENT

February 25, 2026

IGI Report Number LG776619210

Description LABORATORY GROWN DIAMOND

Shape and Cutting Style CUSHION MODIFIED BRILLIANT

Measurements 11.72 X 8.29 X 5.45 MM

GRADING RESULTS

Carat Weight 4.13 CARATS

Color Grade D

Clarity Grade VVS 1

Cut Grade EXCELLENT

ADDITIONAL GRADING INFORMATION

Polish EXCELLENT

Symmetry EXCELLENT

Fluorescence NONE

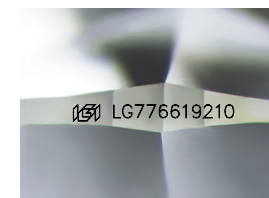
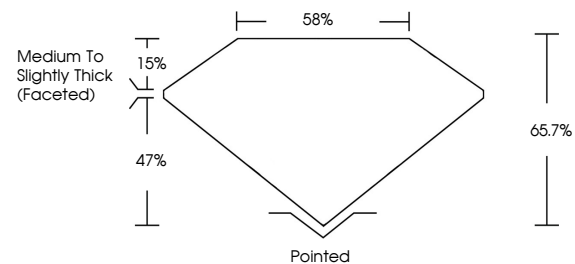
Inscription(s) IGI LG776619210

Comments: As Grown - No indication of post-growth treatment.

This Laboratory Grown Diamond was created by High Pressure High Temperature (HPHT) growth process.

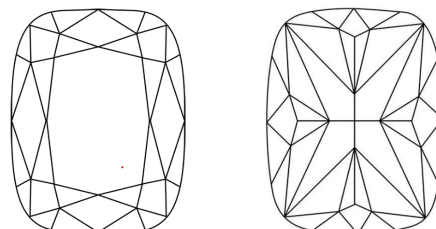
Type II

PROPORTIONS



Sample Image Used

CLARITY CHARACTERISTICS



KEY TO SYMBOLS

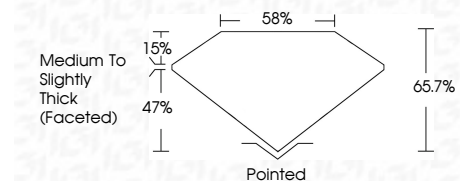
Red symbols indicate internal characteristics. Green symbols indicate external characteristics.

COLOR

D E F G H I J Faint Very Light Light

CLARITY

FL IF VVS 1-2 VS 1-2 SI 1-2 I 1-3
Flawless Internally Flawless Very Very Slightly Included Very Slightly Included Slightly Included Included



ADDITIONAL GRADING INFORMATION

Polish EXCELLENT

Symmetry EXCELLENT

Fluorescence NONE

Inscription(s) IGI LG776619210

Comments: As Grown - No indication of post-growth treatment.

This Laboratory Grown Diamond was created by High Pressure High Temperature (HPHT) growth process.

Type II



Summary of report details including date, report number, description, measurements, grading results, and additional information.